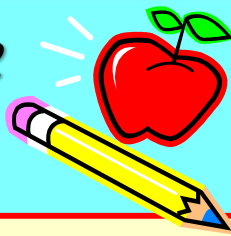


**DECEMBER #2**  
**2019**



# Holland Road Elementary

From all the staff at Holland Road, we wish you and your family the best the Holidays have to offer. We will see you on Jan. 6<sup>th</sup> and we will start on Week 1.

## Volunteers

We are so grateful for all the work of our volunteers this year! From our Bubble Run, Choir Trip, Bazaar, lunch monitoring and so much more we are a better school because you invest in us. We will continue to look for your support in the New Year. We are looking for someone to help calculate our next lunch (pizza) order which will go out in March, 23 Chaperones for our Grade P-2 Field Trip which will come early this year on February 20<sup>th</sup>, 2019 and several PTA events including our Spring Fling. Thank you for all of your support.

### *Safe and Healthy School and Winter Weather*

Please make sure that your children are dressed for the weather. As it gets colder, hats, mitts, warm jackets and snow pants all keep your child warm and comfortable while they are playing outside. They will be going outside except when the weather/playground conditions are extreme.

### School/Bus Cancellations and Delayed Openings

The Halifax Regional Centre for Education takes great care when making the decision to cancel schools and/or buses, or delay the opening of school, in the event of severe or inclement weather. When these situations occur, the information is posted on the HRCE's website at [www.hrce.ca](http://www.hrce.ca), on Twitter at [www.twitter.com/HRCE\\_NS](https://www.twitter.com/HRCE_NS), recorded at 902-464-INFO (4636) and communicated to all local radio stations. Families can also subscribe to receive notice of cancellations and delayed openings by e-mail or text message by following the link on the front page (left side) of the HRCE website.

If weather conditions warrant, the HRCE could implement a delayed opening. Delayed openings would be considered when a severe weather event has concluded but snow clearing or other operations require additional time. Delayed opening may also be considered when the physical plant is experiencing an issue such as a power outage or loss of water and additional time is required to prepare the school to open. If this was to occur, school would be delayed by two hours. In our school, this means school would start at **10:00am**. If Stock Transportation is operating, the expectation will be that students are picked up two hours later than their regularly assigned time pending any weather-related delays. Our lunch and dismissal times will remain at their regularly scheduled times. The EXCEL program will continue in the afternoon for regular times.

*In the event of an early dismissal, we appreciate your patience and prompt phone response as we contact each of our 330 families by phone to ensure a safe dismissal before releasing each student.*

The weather in Nova Scotia is unpredictable so it's always a good idea for families to have a back-up plan for child care when school is cancelled. To learn more about the process on how decisions regarding closures and cancellations are made, visit:

<https://www.hrce.ca/about-our-schools/parents/inclement-weather> .

## Caring Schools Curriculum

We continue working within this program with our students at every grade level. The (CSC) program is a national, research-based K–6 program that builds classroom and schoolwide community while developing students' social and emotional skills. CSC focuses on strengthening students' connectedness to school—an important element for increasing academic motivation and achievement and reducing violence.

## Restorative Approaches

Thanks so much to all our families and students who work really hard to find positive ways to resolve conflict and build healthy relationships within our school. Please see the following link for more information:

[http://novascotia.ca/just/prevention/\\_docs/RA-Fact-Sheet.pdf](http://novascotia.ca/just/prevention/_docs/RA-Fact-Sheet.pdf)

## Important Dates Updated

- **Jan 6 - Schools Re-Open - We will start on Week 1**
  - Feb 1-28 - Primary 2020-2021 Registration Month
  - Feb 17 - Africville Day (No classes)
  - Feb 20 - Early Elementary Field Trip Day stay tuned for more information
  - Mar 16-20 - March Break (No classes)
  - Mar 25 - Assessment & Evaluation Day - Elem/Jr High (No classes)
  - Apr 1 - Parent Teacher evening 5-7pm
  - Apr 2- AM - PD Day; PM - Parent-Teacher Interviews 1-3pm (No classes)
  - Apr 10 - Good Friday (No classes)
  - Apr 13 - Easter Monday (No classes)
  - May 1 - Art Show until 6pm
  - May 8 - Primary Orientation
  - May 15 - PD Day P-12 (No classes)
  - May 18 - Victoria Day (No classes)
  - June 6 - Spring Fling Day 10am-1pm
  - June 19 - Volunteer Assembly 12pm
  - June 26 - Grade 6 Closing 12pm
  - **June 29 - Assessment & Evaluation Day - P-12 (No classes)**
  - June 30 - Last Day of School - Report Cards Home
- **SAC 5pm and PTA 6:30pm Meeting Nights:** Sept 19, Oct 15, Nov 14, Dec 3, Jan 16, Feb 6, March 24, April 16, May 12, June 5